

Application Note ANo8

How to measure additive phase noise of amplifiers using the APPH

Purpose

Additive phase noise, also referred to as residual phase noise, is the self phase noise of a component that adds to an existing signal as the signal passes through it. Hence the additive (residual) phase noise measurement is a valuable technique used to identify the phase noise contribution of a single component as part of a system design.

Introduction

One benefit of the APPH SSA is its capability to measure additive phase noise (also referred to as residual phase noise) of non-self-oscillating DUTs like amplifiers, transmitters, or even mixers or prescalers. This can be done on a single channel or using two-channel cross-correlation to achieve lowest phase noise.

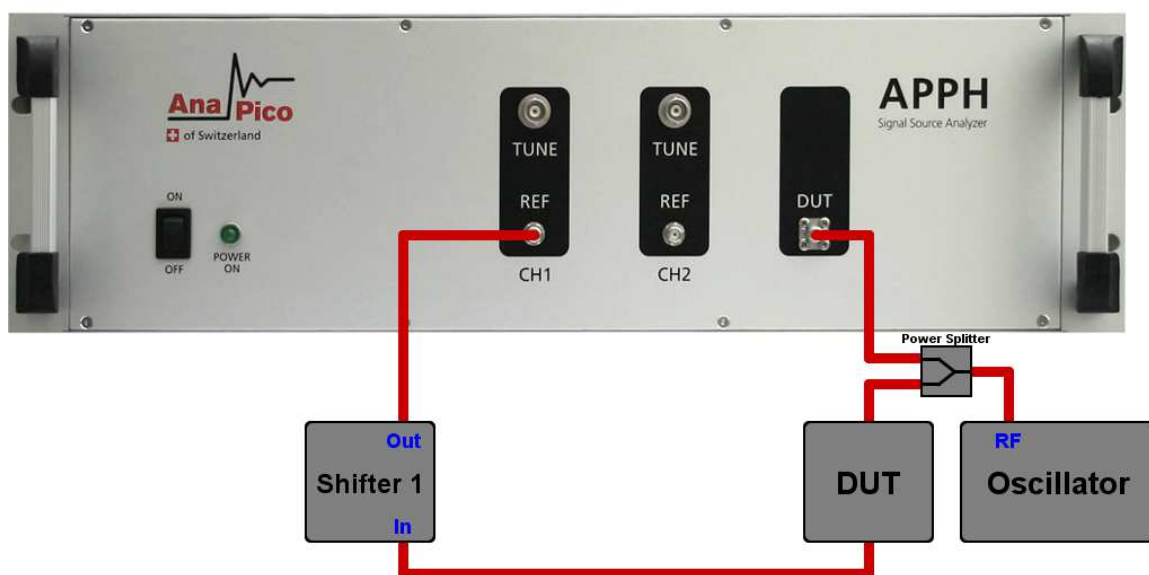


Figure 1: Schematic of the measurement setup

Additive noise measurements are typically at a lower noise level and are more difficult to perform than absolute phase noise measurements, requiring careful measurement setup and calibration. While the setup involves traditional microwave plumbing, the calibration can be tedious and prone to significant error. Anapico's APPH Series of phase noise analyzers addresses this problem by completely automating the calibration.

This application note focuses on the single-channel additive phase noise measurement of an RF amplifier.

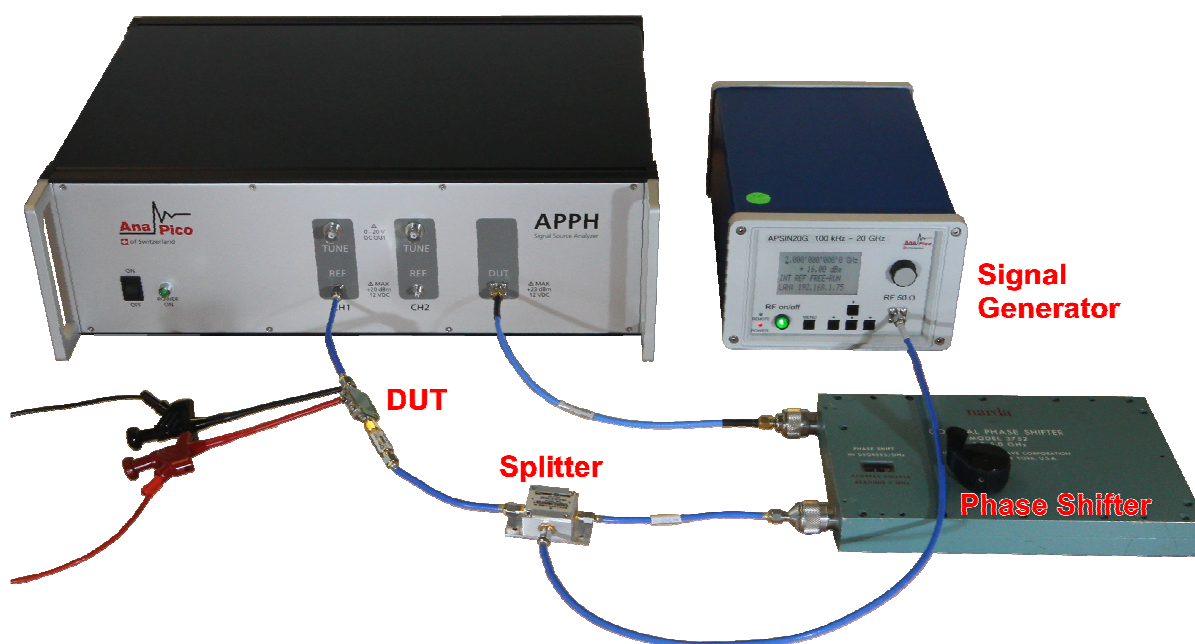


Figure 2: Photograph of the test setup

Theory

The single channel additive phase noise measurement works as follows as shown in the schematic diagram of Figure 1: A stimulus source is set to the desired frequency. The signal is split into two paths. One path is fed into the DUT input and the other path is fed into the REF input. In one signal path a phase shifter is inserted to allow phase adjustments between REF and DUT port. The APPH compares the phase of the DUT and REF paths using a low noise phase detector. Using the phase shifter, the two signal paths are set to phase quadrature (90 degrees apart) at the phase detector. It can be shown that under perfect quadrature the correlated noise in the two signal paths (in particular phase noise from the stimulus source) is cancelled out. Without any DUT, this measurement can be used to determine the setup phase noise floor. Adding the

DUT into one signal path will add the DUT's phase noise and will be detected by the phase detector as deviation from quadrature (because it is only appearing in one signal path).

Note that in a single channel measurement, the phase shifter and the DUT can be located in either the DUT or REF signal paths. This gives some additional flexibility in the measurement setup.

Measurement setup and procedure

The actual hardware setup is shown in Figure 2.

Besides of the APPH, a low phase noise signal source (in our case we use the APSINzoG signal generator), a power splitter and an electrically tunable or mechanical phase shifter is required.

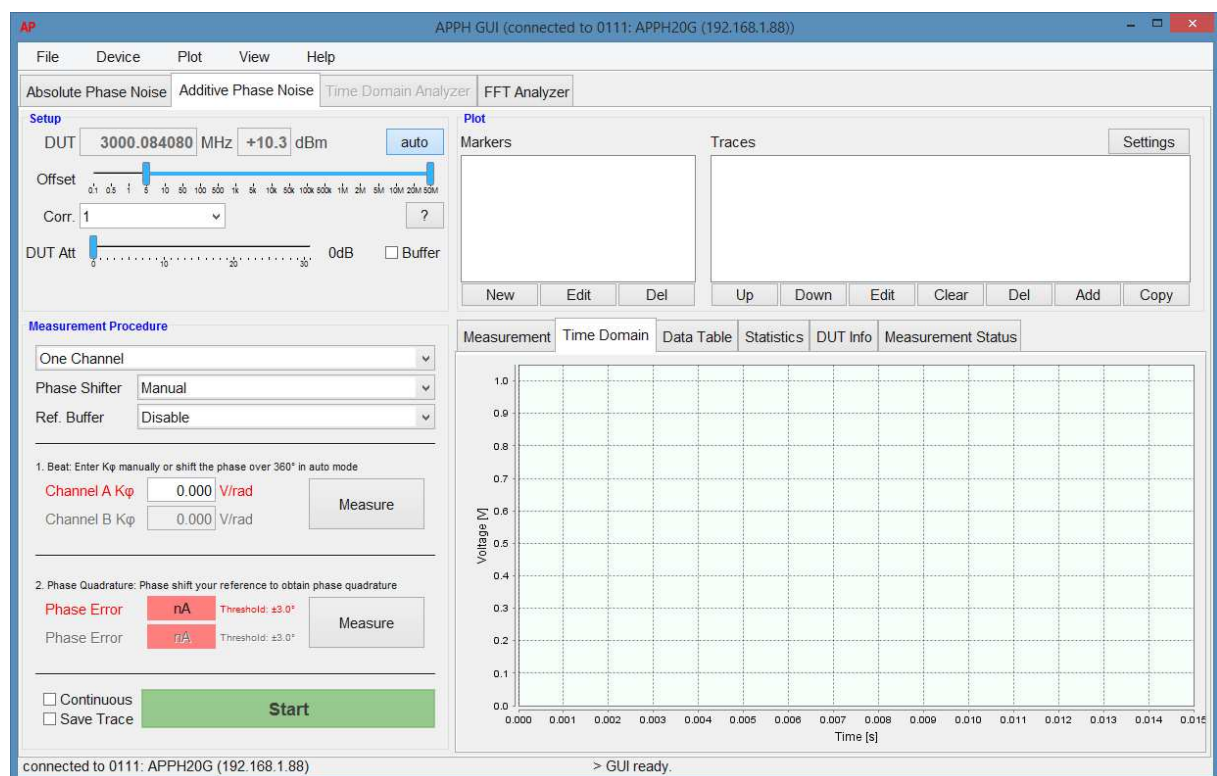


Figure 3: GUI screenshot of the "Additive Phase Noise" tab

The measurement procedure can be split into two steps:

- A. Determine the measurement noise floor
- B. Perform the actual measurement on DUT

Determining the setup noise floor (step A) is especially important to make sure that the DUT noise is properly defined and not influenced by other noise contributors. This step may be omitted if instrument noise floor is already known for the particular setup.

In step B, the DUT is added into one signal path and the measurement is repeated this time including the DUT.

Both steps require a full measurement to be performed, the only difference is that the DUT is replaced with a cable to measure the noise floor.

The GUI setup

Starting the GUI, first the connection to the APPH is established and the "Additive Phase Noise" tab is selected (see Figure 3). The next steps are:

- 1) As in the absolute phase noise tab, select offset range and number of correlations. Then choose if additional signal attenuation or amplification is desired using the input attenuator / low noise amplifier stage.

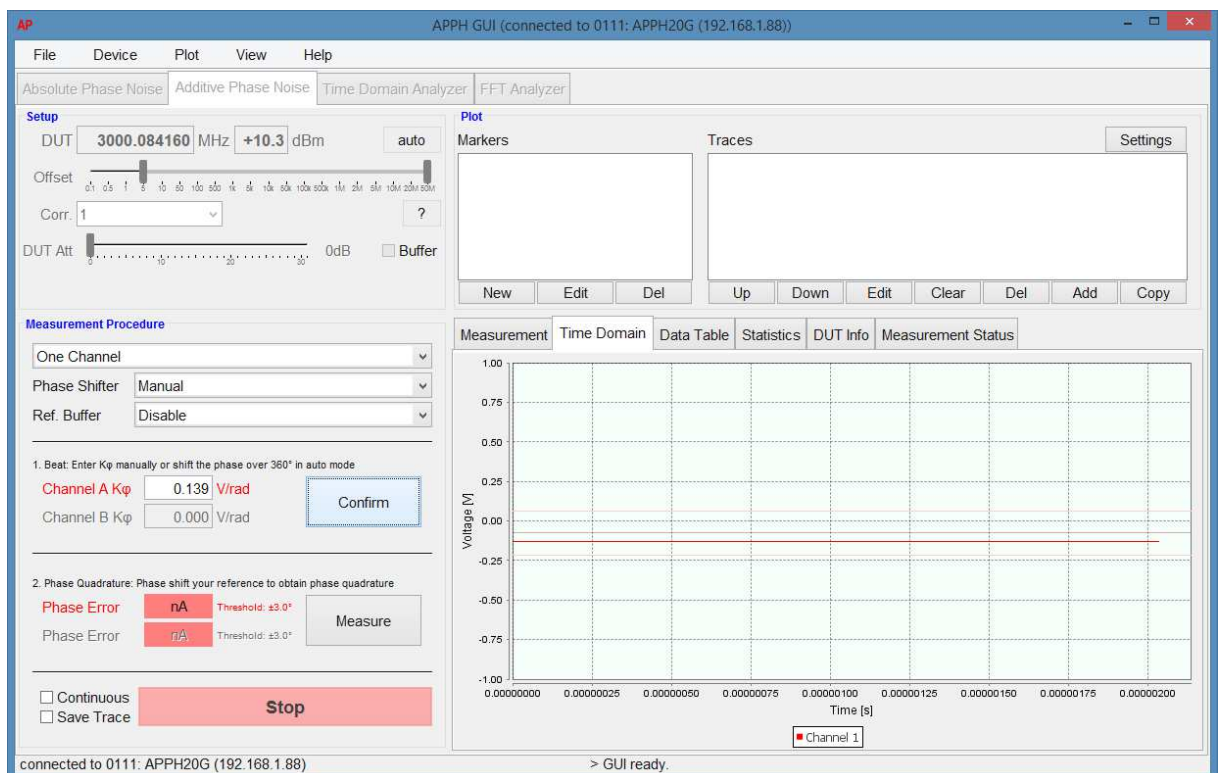


Figure 4: Rotating phase at the phase detector using the phase shifter will determine phase detector constant of the measurement setup

NOTE: Care must be taken, that the DUT and the REF ports are operated at appropriate power levels.

The DUT input power should be between +3 and +10 dBm. Above +10 dBm, the DUT input attenuator should be adjusted. Below +3 dBm, the input low noise amplifier may help to improve the measurement noise floor.

The REF input should be operated between +9 and +17 dBm. Below +9 dBm the REF input low noise amplifier may be switched in to improve the noise floor.

It is recommended to adjust the measurement setup if possible before using the buffer or attenuation options. For instance, the DUT can be placed either on the DUT or on the REF side which will effect the power levels at the DUT and RED input.

To measure the input power of the signals, use the DUT input and press the "auto" button to start the frequency and power measurement of the attached signal.

- 2) Select the "One Channel" measurement. The phase shifter can be chosen to be either a manually controlled phase shifter (as in this example), a voltage controlled phase shifter (via the APPH tuning port), or a remote controlled digital phase shifter from Colby Instruments (Colby compatibility not yet implemented, ask Anapico support for status).

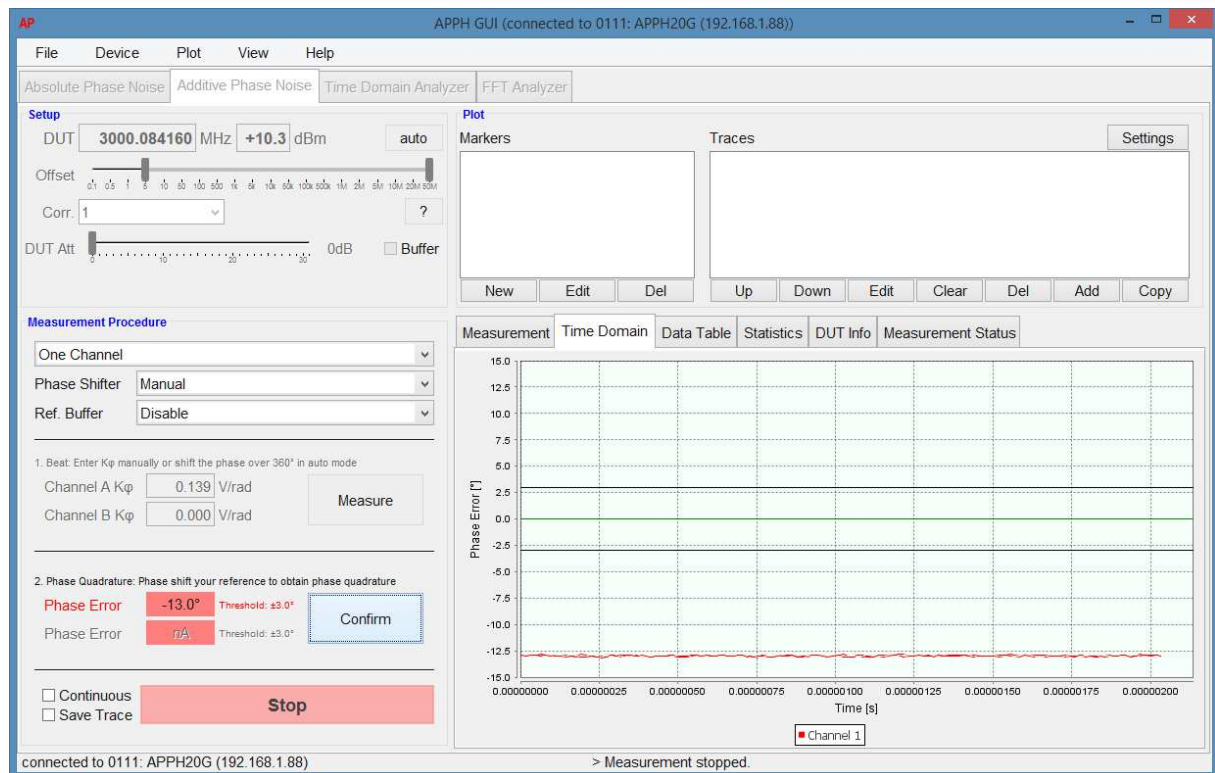


Figure 5: Adjusting to phase quadrature using phase shifter

- 3) Once the setup is completed, the calibration procedure is started by clicking on the first "Measure" button. Using the phase shifter, the phase is now rotated continuously over 360 degrees to determine the phase detector constant (see Figure 4). Complete the calibration step by clicking on the corresponding "Confirm" button.
- 4) In a next step, the signals at the phase detector are adjusted to quadrature (90° phase shifted in respect to each other) using the phase shifter (see Figure 5 & Figure 6). Clicking on the second "Measure" button will continuously show the current phase error which has to be reduced to 0° by phase shifting the reference. Once the phase error is minimized, complete the calibration step by clicking on the second "Confirm" button.
- 5) Once the phase detector has near quadrature phases an is confirmed by the user, the "Start" button is enabled and the actual measurement can be performed (see **Error! Reference source not found.**) by clicking on the green "Start" button. The GUI will automatically switch to the phase noise plot and show the result after the measurement is finished.

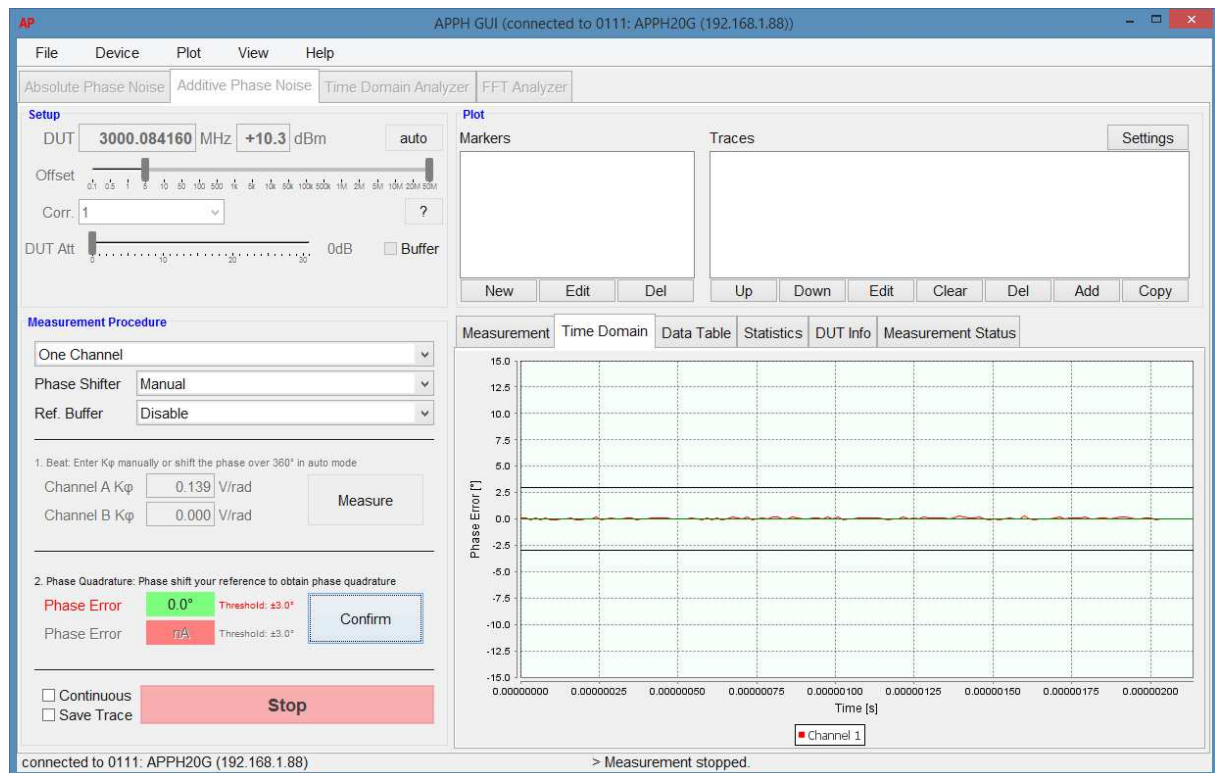


Figure 6: Quadrature achieved within accepted tolerance range

Analyzing the result

Figure 7 shows the measured instrument noise floor (as measured in step A) of the particular setup as the blue curve. Using a stimulus source of +16 dBm at 2 GHz, the setup noise floor is lower than -175 dBc/Hz for offsets above 10 kHz and below -140 dBc/Hz at 10 Hz offset, allowing. Using two channel cross-correlation, noise floors below -190 dBc/Hz can be achieved.

The measurement including the DUT amplifier is shown as the green curve. For offsets up to 4 MHz, the DUT phase noise dominates the setup noise floor (i.e. shows a higher phase noise value), indicating that the measurement is dominated by the DUT noise. At higher offsets, the green trace reaches the setup noise floor. Only a cross-correlation measurement will enable lower level measurements.

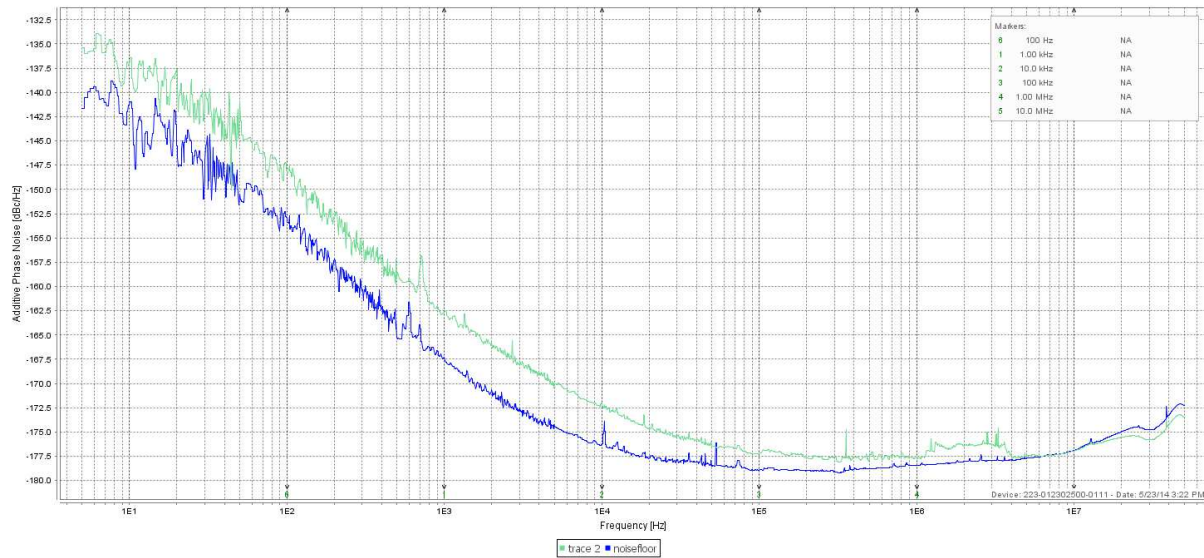


Figure 7: Phase noise of the DUT amplifier

Conclusion

As shown in this application note, a simple procedure using the APPH allows measurement of amplifier phase noise at very low phase noise levels. For lowest phase noise floors, the setup must be duplicated on a second measurement channel and cross-correlation must be applied.